

MRF TURF

Summer 2017

The Quarterly Newsletter of the Manitowoc County Recycling Center



IN THIS ISSUE

WASTE TIRE COLLECTION	1
COMPOST FOR RAISED GARDEN BEDS	2
COMPOST SITE DROP OFF AREA	2
COMPOST PRODUCTS	2
CLEAN SWEEP RESULTS	3
ELECTRONICS RECYCLING	4
LAMP RECYCLING	4
RECYCLING DEPOT GUIDELINES	5
ELECTRONIC NEWSLETTER REQUEST	5

WASTE TIRE COLLECTION

Manitowoc County residents and businesses can drop off their waste tires at the Manitowoc County Recycling Center.

Sept 11 through Sept 23

Fees & Guidelines

- ◆ \$4.00—per car tire or smaller (5 tires or less)
- ◆ \$5.50—per standard truck tire (5 tires or less)
- ◆ 14 cents per pound (\$280 per ton) for:
 - ◆ Quantities of 6 or more tires
 - ◆ Semi Tires
 - ◆ Tractor Tires
 - ◆ Tires on rims
- ◆ Register at Main Office before dropping off tires.
- ◆ Residents and businesses with large quantities of tires should call the Recycling Center.
- ◆ Collection employees reserve the right to judge, based on tire size and quantity, whether a customer is charged per tire or by weight.

Waste Tire Collection Location & Hours:

3000 Basswood Road
Manitowoc
Monday—Friday
7am—4pm
Saturday
8am—Noon



For more information call **920-683-4333** or visit www.manitowocrecycles.org

The Manitowoc County Recycling Center will be holding the annual tire collection Sept 11 through Sept 23. This annual event has collected an estimated 3.35 million pounds of waste tires since it began in 1998.

Proper disposal of tires can help protect the environment and benefit human health and safety. Tires have been banned from landfills since 1995 because they take up too much space and their bulky size makes them hard to keep buried. Unfortunately, tires are often illegally dumped along roadways or in illegal stockpiles. Aside from looking like a mess, this can cause environmental problems. Tires can pollute surface and groundwater and provide homes for rodents and breeding grounds for mosquitoes. If tires catch fire, they can also release large amounts of pollutants into the air, water and soil.

Waste tires can be reused in a number of ways. They can be shred into rubber chips and used as an artificial turf or groundcover in playgrounds. Tire rubber can be incorporated into asphalt roads, running tracks and used in other rubber products. Tires may also be used as an alternative fuel source. When burned in specially designed incinerators the release of noxious smoke is controlled.

Taking proper care of your tires can prolong the life of the tire. Following the scheduled rotation and maintaining proper air pressure can help you get more use out of them. Fixing alignment problems early can also save on tire wear.

Mission Statement

To provide materials recycling and recovery services to the citizens of Manitowoc County and to keep the public informed about recycling issues.



Manitowoc County Recycling Center & Compost Sites
3000 Basswood Road, Manitowoc WI
920-683-4333
www.manitowocrecycles.org



COMPOST FOR RAISED GARDEN BEDS

Raised garden beds are popular among many gardeners, especially those with limited space or poor soil. Often the extra work of building one can pay off by making weeding, planting, harvesting and controlling pests much easier. Raised garden beds often require obtaining large amounts of soil to construct. It is wise to pay attention to the soil mix that is going into a newly established raised garden bed. Buying bags of soil to fill your raised bed can be cost prohibitive. One common approach that is used by many gardeners is to use a half and half blend of an aged compost and topsoil. This is the technique that was used to establish the raised beds located at the Grow it Forward Community Garden located on 14th street in Manitowoc just north of Monroe Elementary School.

Mixing compost and topsoil together will supply your plants with the minerals found in the topsoil and the organic matter and water holding ability of the compost. Compost will help to improve the soil structure. If soil has clay in it, the compost will loosen and break up the clay making it easier for plants to develop healthy root systems. If your soil is sandy, the compost will help retain water and nutrients that can otherwise wash through a sandy soil. Compost can also help to buffer acidic or alkaline soils since it usually has a more neutral pH.

Once a good soil mix is established other materials can be added depending on your gardening goals or based on soil testing. Many gardeners will add vermicompost, aged manures, rock dust, eggshells, or many other different soil amendments depending on the needs of the plants being grown.

Later into a growing season gardeners will often "sidedress" their plants with compost by spreading a small pile of it next to the base of their plants. This helps give the plants a nutrient boost as water



COMPOST SITES—DROP OFF AREA

Both the Basswood Road and Woodland Drive Compost Sites are available for drop off of acceptable yard materials during the posted hours. Remove plastic bags and other unacceptable debris from the materials you drop off. Brush drop offs should be placed on the brush pile. Keeping your yard material drop offs clean and free of unacceptable items will help us create better compost products. When using the compost sites drive slow and watch for traffic. It is advisable to avoid using the compost sites during or after heavy rains since they can easily become rutted and slippery. Do not use the compost sites outside of the posted hours.

Accepted Items: Grass, leaves, flowers, plants, pumpkins, fruits, vegetables, garden waste, yard waste, brush, branches (not more than 6 inches in diameter or longer than 5 feet), clean woodchips, clean saw dust, and natural holiday trees.

Unacceptable Items: Stumps, ashes, animal waste, sod with soil, topsoil or dirt, rocks, gravel, lumber, garbage, large branches greater than 6 inches in diameter or longer than 5 feet.

Loads may be subject to inspection by Recycling Center staff. Illegal dumping is subject to fine per Manitowoc Code Section 6.17. Placing unaccepted items in an otherwise designated recycling container or pile is considered illegal dumping and is subject to fine. If you have questions about a particular material, call 683-4333 and ask.

BASSWOOD COMPOST SITE

3000 Basswood Rd, Manitowoc
 Mon-Fri 7am-6pm
 Sat 8am-6pm

WOODLAND COMPOST SITE

4191 Woodland Dr, Two Rivers
 Mon-Fri 10am-6pm
 Sat 8am-6pm

COMPOST PRODUCTS

Wood mulch and compost are available at the Recycling Center Main Office during the posted office hours. Purchases must be made before loading. Note that the office hours are different than the drop off site hours. Loading is generally available Monday through Friday from 7:30am to 3:30pm. Deliveries can also be set up within Manitowoc County. Call 920-683-4333 for more info.



RECYCLING CENTER OFFICE

3000 Basswood Rd, Manitowoc
 Mon-Fri 7am-4pm
 Sat 8am-Noon

SCREENED COMPOST PRICES

- 1 bushel: \$2.50
- 1 cubic yard: \$13.00
- 6 cubic yards including delivery: \$108.50

UNSCREENED COMPOST PRICES

- 1 bushel: \$0.50
- 1 cubic yard: \$1.50
- 6 cubic yards including delivery: \$39.50

WOOD MULCH PRICES

- 1 bushel: \$0.75
- 1 cubic yard: \$8.00
- 6 cubic yards including delivery: \$78.50



HAZARDOUS WASTE CLEAN SWEEP RESULTS

The Manitowoc County Department of Public Works and Manitowoc County Recycling Center would like to thank all the participants of the 2017 Hazardous Waste Clean Sweep. This year the collection had 462 households, 13 farms and 14 businesses participate and collected a total of 32,897 pounds of hazardous waste. Households turned in 23,490 pounds of hazardous chemicals. Farms turned in 5,764 pounds. Most of the items turned in were old paints and pesticides, though a significant amount of solvents and corrosive substances were also dropped off.

The business portion of Clean Sweep served 14 local businesses who qualified as "Very Small Quantity Generators" under the program. These businesses brought in 3,643 pounds of hazardous waste. Businesses are offered a substantial discount when they bring their materials to the Clean Sweep event.

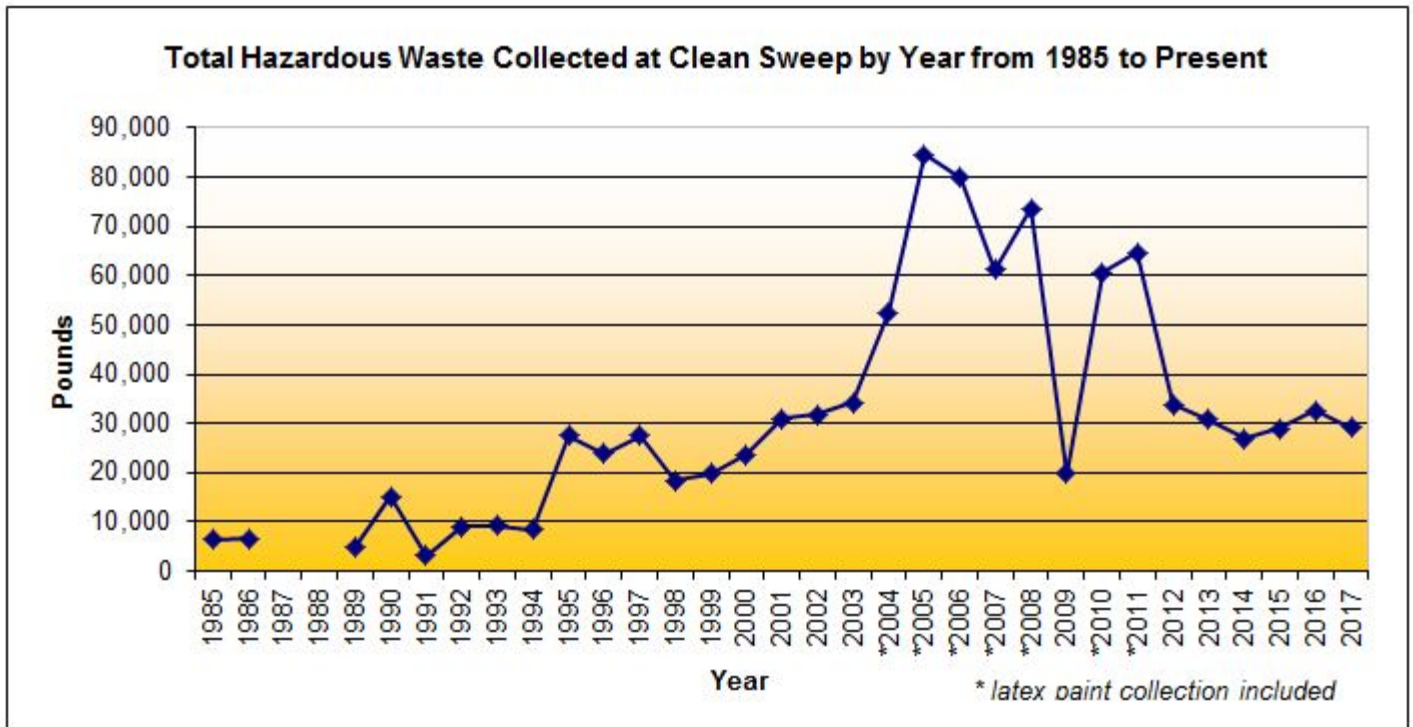
Item	Pounds
Lead/Oil Based Paint	11,758
Waste Oil	2,000
Pesticides/Poisons	4,944
Solvents/Thinners	1,050
Aerosol Cans	1,860
Caustics/Corrosives	403
Reactives	7
PCBs	0
Dioxins	9
Mercury	45
Other	1,414
TOTAL POUNDS	23,490

The Manitowoc County Hazardous Waste Clean Sweep started in 1985. Since it began, households and farms have turned in approximately 979,839 pounds of material. All of the collected items are properly recycled, neutralized or disposed of at special disposal sites or hazardous waste incinerators that render the materials harmless.

Many cleansers, home improvement products, automotive products and pesticides can be dangerous when stored or disposed of improperly. They can contaminate the soil, water, and air when spilt or illegally dumped. Improperly stored items could be involved in accidental poisonings of children and pets. The Clean Sweep Program provides an opportunity for households and farms to safely dispose of these materials for free and for eligible businesses to save on their disposal costs.

Clean Sweep is an annual collection typically held in mid-May. It is made possible partly through grant funding from the Wisconsin Department of Agriculture, Trade and Consumer Protection, a contribution from the Ridgeway Landfill, and volunteer labor.

The Manitowoc County Recycling Center has a number of programs throughout the year that you can use to help our environment and clean up at home including Composting, Drug Disposal programs, an ongoing Electronics Collection, a Tire Collection as well as the Hazardous Waste Clean Sweep Program. To learn more about these and other programs log onto www.manitowocrecycles.org, call 920-683-4333, or visit the Recycling Center office at 3000 Basswood Road.



ELECTRONICS RECYCLING. The Manitowoc County Recycling Center has an ongoing electronics collection program. A variety of electronics are accepted including televisions, computer equipment, kitchen gadgets, electric tools. Items that cannot be accepted include Freon containing appliances like air conditioners, dehumidifiers, or refrigerators as well as bulky appliances like stoves, washers, or dryers.



It is important to recycle electronics for a number of reasons. They can contain hazardous materials that can enter the environment if disposed of improperly. Dumping or burning them can allow heavy metals and toxic compounds to infiltrate into the soil, air, and water. Heavy metals such as lead and mercury have the ability to leach out of electronic devices under certain conditions. These materials can cause a number of health problems in humans and wildlife. Electronics recycling helps recover reusable raw materials, conserves landfill space, and creates jobs.

Since September 2010, Wisconsin's Electronic Recycling Law banned certain consumer electronic devices from landfills and incinerators and established a collection and recycling system in Wisconsin for households and K-12 public schools. Since then the Recycling Center has recycled approximately 1.85 million pounds of unwanted electronics.

The Manitowoc County Recycling Center is registered with the Wisconsin Department of Natural Resources as a certified electronics collector. This means that ALL the electronics recycled through our program are sent to reputable recycling companies who guarantee the confidential destruction of any personal data remaining on your electronics, recycle or reuse all of the materials they receive, and are registered with the Environmental Protection Association and Wisconsin Department of Natural Resources.

All televisions and monitors are measured diagonally across the glass portion of the screen. Televisions and monitors must not be broken or stripped. Due to the increased health and safety issues associated with handling, storing, and transporting stripped electronics or broken televisions, these items may be refused or assessed an extra fee depending on the situation.

Item	Fee
Flat panel TV or monitor—Small (less than 27")	\$10 each
Flat panel TV— Large (27" or more)	\$20 each
Microwave	\$10 each
CRT TV or monitor—Small (less than 24")	\$15 each
CRT TV—Medium (27" or more up to 36")	\$25 each
CRT TV—Large (more than 36")	\$35 each
Computer Processor	\$10 each
Other Electronics (includes: laptops, stereos, vcr/dvd, printers, scanners, cameras, and many other electric appliances)	\$0.25 per lb
Cell Phones	Free
Single Use Batteries (alkaline, lithium, button batteries sorted by type)	\$1.20 per lb
Rechargeable Batteries	Free

If you have questions, visit www.manitowocrecycles.org or call the Manitowoc County Recycling Center at 683-4333.

LAMP RECYCLING is one of the services provided by the Manitowoc County Recycling Center's ongoing electronics collection program. Some lamps, including fluorescent tubes, compact fluorescent bulbs and high intensity discharge bulbs, contain small amounts of mercury that can be harmful to human health and the environment when they are disposed of in the trash. Even incandescent bulbs contain lead, which is also a toxic metal. All the materials in these bulbs can be recycled. During 2016 the Recycling Center collected approximately 18,300 bulbs and 860 pounds of light ballasts from residents and businesses. Once received, the bulbs are carefully packaged for shipping to a specialized recycling facility where hazardous materials are safely removed. All the materials in these bulbs can be recycled without generating any waste. Even the hazardous materials, like mercury, can be recovered and reused.

Bring your burnt out light bulbs and ballasts to main office at the Manitowoc County Recycling Center. When transporting large amounts of fluorescent tubes secure them in boxes or by taping them together in manageable bundles using an easy release masking or painters tape (no duct tape).



Item	Fee
Ballasts (PCB)	\$0.93 per lb
4 ft. Fluorescent Light Bulbs*	\$0.40 each
8 ft. Fluorescent Light Bulbs*	\$0.50 each
Compact Fluorescent Light Bulbs*	\$0.40 each
High Intensity Discharge (HID) Light Bulbs (Including Sodium, Metal Halides, & Mercury Vapor)*	\$1.35 each
Incandescent, Flood and Spot Light Bulbs*	\$0.30 each
LED Bulbs*	\$2.60 each
Ballasts (non-PCB)	\$0.55 per lb
Ballasts (PCB)	\$0.93 per lb







*There will be an additional charge for any broken light bulbs.

RECYCLING DEPOT

The Manitowoc Recycling Center maintains a residential drop off area at the Recycling Center Main office located at 3000 Basswood Road. It is open Monday-Friday from 7am to 4pm, and Saturday from 8am to Noon. This site is intended for use by all county residents. There is no trash or garbage drop off at this location. Contact a local hauler or the Ridgeview Landfill for disposal of trash. Different municipal drop off sites may be more accessible to you depending on the city, township or village you are from.

General Drop Site Guidelines

- Place your recyclables in the bunker or receptacle labeled for that material.
- Remove any plastic bags or strings and take them home with you to place in your trash.
- Do not place nonacceptable items in the bunkers or receptacles.
- Do not place materials outside receptacles on the ground.
- Large loads of cardboard, paper or plastic can be placed on appropriate pile on the tipping floor.
- Use caution driving through the drop site and on the tipping floor.

<p><u>Paper</u> Includes newspapers, junk mail, magazines, computer paper, books with metal or plastic binding removed etc. Paper should be clean and dry. No paper contaminated with food or oil. No paper coated with foil, plastic or heavy glue. No plastic/foil wrapping paper.</p> 	<p><u>Plastic</u> Check for a neck. We only accept #1 and #2 bottles and jars. Remove the caps, rinse and flatten. No tub shaped containers or bottles that contained oil or pesticide (even if rinsed). No plastic wraps, films, bags, trays, pails, packaging peanuts, Styrofoam, or any other non bottle shaped item. Please do not tie milk jugs together or tie in plastic bags.</p> 
<p><u>Glass Bottles</u> Any color glass bottle or jar can be recycled. Put into designated bunker. Remove lids or caps and rinse. No window glass, mirrors, light bulbs, clay, ceramics, drinking glasses or ovenware.</p> 	<p><u>Cartons</u> Cartons include shelf stable and refrigerated containers for wine, milk, juice, cream, soy milk, soup, and egg substitutes. Drop off cartons with the plastic bottles. They should be emptied and flattened.</p> 
<p><u>Cardboard</u> Should be clean and flattened. No soiled cardboard or cardboard coated with wax, tin, or plastic.</p> 	<p><u>Cans</u> Tin, steel, and aluminum cans. Coated cans, foil, and pie tins are ok. Empty and rinse out food residue.</p> 

ELECTRONIC NEWSLETTER REQUEST

Are you interested in receiving current updates recycling programs in Manitowoc County? Join our electronic mailing list to receive our quarterly newsletter. Either call us at 920-683-4333 or email jonreisenbuechler@co.manitowoc.wi.us and request to be added to our email distribution list. The recycling center will not give away or sell your information. You will receive our quarterly newsletter detailing news and information about the recycling center and related events.

The Manitowoc County Recycling Center is operated by Holiday House of Manitowoc County Inc. Serving people with disabilities since 1957.



The Manitowoc County Recycling Center is a business unit of the Manitowoc County Department of Public Works and is operated in partnership with the Manitowoc County Expo Center.

